

# Get the Most from Your MS

Agilent J&W DB-5Q and HP-5Q GC columns



## Meet the new gold standard for GC/MS

Agilent J&W 5Q GC columns are designed to ensure optimal analyte delivery to your quadrupoles. They combine industry-leading ultra inert performance with ultra low-bleed technology, setting a new standard for GC/MS column reliability and productivity.

- **Ultra low-bleed performance** enhances data accuracy with high spectral fidelity and stable baseline integration.
- **Ultra inert performance** increases sensitivity for active, trace-level analytes and provides balanced deactivation for multiclass analyte panels.
- **Ultrafast conditioning and outstanding column durability** improve uptime by minimizing the frequency of column changes.
- **Compatibility with any GC/MS system** ensures a seamless fit for all Agilent GC platforms.

**50** Agilent J&W  
Years GC Columns  
Confidence in every separation



### Pioneering GC column innovation for 50 years

2024 marks the 50th anniversary of Agilent J&W GC columns. Throughout these five decades, our industry-first products have set the foundation for the GC columns we know today.

As you strive to maximize the productivity and performance of your GC instrumentation, you can count on Agilent J&W GC columns.

[explore.agilent.com/jw50-columns](https://explore.agilent.com/jw50-columns)

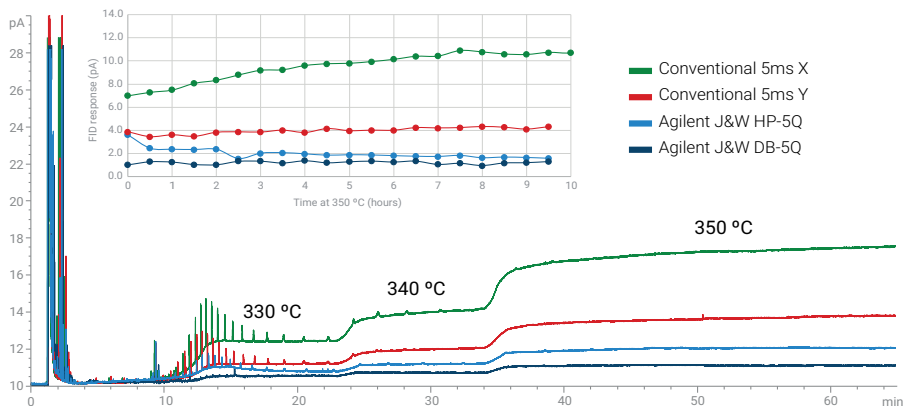


Explore our full line of Agilent J&W 5Q GC columns.  
[www.agilent.com/gcms/5q-columns](https://www.agilent.com/gcms/5q-columns)

## Push the boundaries of MS performance with Agilent J&W 5Q GC columns

### Ultra low-bleed performance simplifies mass spectral identification

As GC columns undergo high-temperature cycling, column bleed can elevate baselines and create spectral interference, lowering the quality of your data. Agilent J&W 5Q GC columns were designed with an ultra low-bleed chemistry that significantly reduces the impact of column bleed.

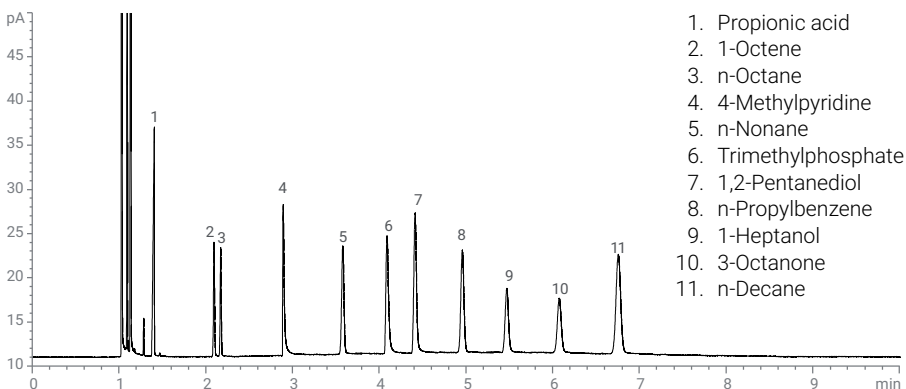


Compared to conventional 5ms columns, Agilent J&W 5Q GC columns have significantly lower bleed profiles, resulting in more stable baselines. A more stable baseline ensures accurate integration, especially for trace-level analytes with low signal-to-noise ratios.

[Read technical overview 5994-7586EN.](#)

### Ultra inert performance lets you confidently quantify low-level, active compounds

A noninert GC column can cause peak tailing, resulting in signal loss and lower sensitivity. Agilent J&W 5Q GC columns feature industry-leading ultra inert deactivation chemistry—helping you achieve the increasingly low detection limits that tough regulatory requirements demand.



Every Agilent J&W 5Q column is tested with our demanding Über One test probe mixture to ensure consistent, reliable performance for challenging active analytes.

[Read technical overview 5994-7586EN.](#)

Agilent J&W 5Q GC columns are available in high-efficiency, hydrogen-compatible, and backflushing dimensions.

[www.agilent.com/gcms/5q-columns](http://www.agilent.com/gcms/5q-columns)

DE36557409

This information is subject to change without notice.

© Agilent Technologies, Inc. 2024  
Published in the USA, September 25, 2024  
5994-7659EN